

Cargoflex

Article Master No.: 000183

PU Suction hose & Transport hose, extremely abrasion and vacuum resistant



transparent



moderately flexible



heavy



very pressure resistant

Product Details

Construction / Material

- Type of construction: Profile extruded hose with metal spiral
- Spiral Design: made of steel wire
- Material of the spiral: Spring steel
- Execution of the wall: made of pure material, Wall thickness between the spirals approx. 3.2 - 4.8 mm, depending on DN
- Material of the wall: Polyester Polyurethane
- Specifications of the wall: Material is more abrasion resistant than comparable polyether polyurethane according to DIN ISO 4649

Properties

- Chemical Properties: microbe-resistant, halogen-free, good UV resistance, good ozone resistance, plasticiser-free
- Mechanical Properties: excellent tensile and tear strength
- Flexibility: moderately flexible
- Weight: heavy
- Pressure Resistance: very pressure resistant
- Colour: transparent
- Other: high vacuum and good pressure resistance, longer service life

Operating Temperature

- Temperature Range: -40 - 90
- short-term maximum temperature: peaks to 125 °C

Delivery Information

- Delivery, type of production: Various nominal widths in standard lengths are available ex-production, individual nominal widths and lengths also ex-stock

Application Areas

- Areas of application: Industry, Bulk & Construction, Chemistry, Food & Pharma, Plastics, Metal & Toolmaking

Customizing Options

- optional item modification (on request): other lengths, other nominal widths, with customer-specific imprint

Article Variants

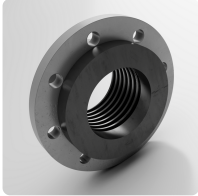
| Extended Article Number | Article number | Nominal Size (DN) mm | Outer diameter mm | Bending radius* mm | Weight kg/m | Operating pressure bar | Negative pressure bar | Max. Production length m | Stock Lengths m |
|-------------------------|----------------|----------------------|-------------------|--------------------|-------------|------------------------|-----------------------|--------------------------|-------------------|
| 000183:102:x | 000183 | 102 | 117 | 300 | 3.04 | 3.15 | 0.87 | 20.00 | 2.50, 5, 7.50, 10 |
| 000183:127:x | 000183 | 127 | 143 | 375 | 3.75 | 2.55 | 0.87 | 20.00 | |
| 000183:152:x | 000183 | 152 | 168 | 450 | 4.45 | 2.25 | 0.82 | 20.00 | 2.50, 5, 7.50, 10 |
| 000183:203:x | 000183 | 203 | 222 | 600 | 8.28 | 1.65 | 0.66 | 10.00 | 2.50, 5, 7.50, 10 |
| 000183:250:x | 000183 | 250 | 270 | 738 | 10.20 | 1.37 | 0.52 | 10.00 | |
| 000183:254:x | 000183 | 254 | 275 | 750 | 10.36 | 1.35 | 0.51 | 10.00 | 2.50, 5, 7.50, 10 |

All data refer to a medium and ambient temperature of +20°C.
 Specification of the bending radius related to the inside of the hose bend
 Subject to technical changes and colour deviations

Delivery Variants

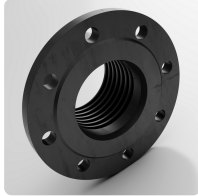
Available in other lengths, other nominal diameters, with customer-specific customer-specific imprint.

Possible Connection Elements



Combiflex PU Swivel Flange

screw-on plastic collar with loose flange for Master-PUR L, Master-PUR H, Master-PUR HX and Master-PUR Performance, for counterflanges acc. to DIN 2632 / DIN 2633 / DIN 2673



Combiflex PU Fixed Flange

screw-on plastic flange for Master-PUR L, Master-PUR H, Master-PUR HX and Master-PUR Performance, for counterflanges according to DIN 2632 / DIN 2633 / DIN 2673



Combiflex PU Threaded Sockets

PU threaded connector for all Master-PUR L, Master-PUR H and Master-PUR HX hose types, based on DIN ISO 228



Combiflex PU Cone Flange, screwable

screw-on quick connector system for all Master-PUR L, Master-PUR H and Master-PUR HX hose types, following DIN 3016



Hose Clamp with Bolts

special clamp for fastening medium and heavy spiral hoses to connection pipes on mobile and stationary units



Hose Clamp with Bolts, Steel quality W4, stainless steel 1.4301

Special clamp for fastening medium and heavy spiral hoses to connection pipes on mobile and stationary units

Individual consultation

We offer consultation by phone:
+49 209 97077-112

Product requests via
masterflex.de/en

Address Headquarters

Masterflex SE
Willy-Brandt-Allee 300
45981 Gelsenkirchen

