



Master-PUR H EL

Article Master No.: 000075

PU Suction & Transport Hose, medium duty, very flexible, electroconductive



antistatic



electrically
conductive



flexible



medium
heavy



pressure
resistant

Product Details

Construction / Material

- Type of construction: Profile extruded hose with metal spiral
- Spiral Design: made of steel wire
- Material of the spiral: Spring steel
- Execution of the wall: made of electrically conductive material, Wall thickness between the spirals approx. 1.4 mm
- Material of the wall: Polyester Polyurethane
- Specifications of the wall: Surface resistance $R_0 < 10^3 \text{ Ohm}$

Properties

- Specifications of the product: Complies with DIN 26057
- Chemical Properties: halogen-free, good resistance to chemicals, good UV resistance, good resistance to oil, good resistance to petrol, good ozone resistance
- Flexibility: flexible
- Weight: medium heavy
- Pressure Resistance: pressure resistant
- Colour: black
- Other: high vacuum and good pressure resistance, Configurable as a hose system with digital interface for compatibility with the AMPIUS® app

Operating Temperature

- Temperature Range: -40 - 90
- short-term maximum temperature: peaks to 125 °C

Delivery Information

- Delivery, type of production: Various nominal widths in standard lengths are available ex-production, individual nominal widths and lengths also ex-stock

Application Areas

- Areas of application: Bulk & Construction, Chemistry, Surface Technology, Food & Pharma, Plastics

Customizing Options

- optional item modification (on request): other nominal widths, other colours, with customer-specific imprint

Article Variants

| Extended Article Number | Article number | Nominal Size (DN) mm | Outer diameter mm | Bending radius* mm | Weight kg/m | Operating pressure bar | Negative pressure bar | Max. Production length m | Stock Lengths m |
|-------------------------|----------------|----------------------|-------------------|--------------------|-------------|------------------------|-----------------------|--------------------------|-----------------|
| 000075:25:x | 000075 | 25 | 32 | 46 | 0.28 | 4.17 | 0.92 | 25.00 | / |
| 000075:26:x | 000075 | 26 | 33 | 47 | 0.29 | 4.16 | 0.92 | 25.00 | 5, 10 |
| 000075:32:x | 000075 | 32 | 41 | 60 | 0.39 | 3.25 | 0.92 | 25.00 | 5, 10, 15 |
| 000075:38:x | 000075 | 38 | 47 | 69 | 0.46 | 3.12 | 0.82 | 25.00 | 5, 10, 15 |
| 000075:40:x | 000075 | 40 | 49 | 72 | 0.49 | 3.00 | 0.82 | 25.00 | 5, 10 |
| 000075:45:x | 000075 | 45 | 55 | 80 | 0.55 | 2.95 | 0.81 | 25.00 | / |
| 000075:51:x | 000075 | 51 | 61 | 87 | 0.71 | 2.90 | 0.79 | 25.00 | 5, 10, 15 |
| 000075:55:x | 000075 | 55 | 65 | 95 | 0.77 | 2.75 | 0.76 | 25.00 | / |
| 000075:60:x | 000075 | 60 | 70 | 102 | 0.84 | 2.55 | 0.74 | 25.00 | 5, 10 |
| 000075:65:x | 000075 | 65 | 75 | 112 | 0.91 | 2.40 | 0.66 | 25.00 | 5, 10 |
| 000075:70:x | 000075 | 70 | 80 | 117 | 0.97 | 2.25 | 0.66 | 25.00 | 5, 10 |
| 000075:76:x | 000075 | 76 | 87 | 126 | 1.06 | 2.00 | 0.59 | 25.00 | / |
| 000075:80:x | 000075 | 80 | 91 | 132 | 1.11 | 2.00 | 0.59 | 25.00 | 5, 10 |
| 000075:90:x | 000075 | 90 | 101 | 149 | 1.25 | 1.65 | 0.52 | 25.00 | / |
| 000075:102:x | 000075 | 102 | 112 | 165 | 1.48 | 1.50 | 0.44 | 25.00 | 5, 10 |
| 000075:110:x | 000075 | 110 | 121 | 179 | 1.61 | 1.35 | 0.44 | 25.00 | / |
| 000075:115:x | 000075 | 115 | 126 | 186 | 1.68 | 1.35 | 0.31 | 25.00 | / |
| 000075:120:x | 000075 | 120 | 131 | 194 | 1.75 | 1.30 | 0.31 | 25.00 | / |
| 000075:127:x | 000075 | 127 | 139 | 205 | 1.91 | 1.30 | 0.31 | 25.00 | / |
| 000075:130:x | 000075 | 130 | 141 | 209 | 1.96 | 1.30 | 0.31 | 25.00 | / |
| 000075:140:x | 000075 | 140 | 151 | 224 | 2.11 | 1.05 | 0.25 | 25.00 | / |
| 000075:152:x | 000075 | 152 | 163 | 242 | 2.29 | 1.05 | 0.25 | 25.00 | / |
| 000075:160:x | 000075 | 160 | 171 | 255 | 2.51 | 0.90 | 0.25 | 25.00 | / |
| 000075:170:x | 000075 | 170 | 181 | 270 | 2.67 | 0.90 | 0.18 | 25.00 | / |
| 000075:180:x | 000075 | 180 | 191 | 285 | 2.82 | 0.75 | 0.18 | 25.00 | / |
| 000075:203:x | 000075 | 203 | 215 | 321 | 3.50 | 0.75 | 0.18 | 25.00 | / |
| 000075:225:x | 000075 | 225 | 237 | 353 | 3.65 | 0.60 | 0.12 | 25.00 | / |
| 000075:250:x | 000075 | 250 | 259 | 385 | 3.84 | 0.60 | 0.12 | 25.00 | / |

| Extended Article Number | Article number | Nominal Size (DN) mm | Outer diameter mm | Bending radius* mm | Weight kg/m | Operating pressure bar | Negative pressure bar | Max. Production length m | Stock Lengths m |
|-------------------------|----------------|----------------------|-------------------|--------------------|-------------|------------------------|-----------------------|--------------------------|-----------------|
| 000075:254:x | 000075 | 254 | 263 | 390 | 3.84 | 0.60 | 0.12 | 25.00 | / |
| 000075:275:x | 000075 | 275 | 288 | 426 | 4.22 | 0.45 | 0.12 | 25.00 | / |
| 000075:280:x | 000075 | 280 | 293 | 435 | 4.30 | 0.45 | 0.12 | 25.00 | / |
| 000075:300:x | 000075 | 300 | 313 | 465 | 4.94 | 0.45 | 0.12 | 20.00 | / |
| 000075:315:x | 000075 | 315 | 328 | 488 | 5.19 | 0.45 | 0.12 | 20.00 | / |
| 000075:325:x | 000075 | 325 | 338 | 503 | 5.35 | 0.45 | 0.12 | 20.00 | / |
| 000075:350:x | 000075 | 350 | 363 | 540 | 6.96 | 0.45 | 0.12 | 20.00 | / |
| 000075:375:x | 000075 | 375 | 388 | 580 | 7.45 | 0.30 | 0.07 | 20.00 | / |
| 000075:400:x | 000075 | 400 | 413 | 615 | 7.95 | 0.30 | 0.07 | 20.00 | / |
| 000075:450:x | 000075 | 450 | 463 | 690 | 8.94 | 0.30 | 0.07 | 20.00 | / |
| 000075:500:x | 000075 | 500 | 513 | 765 | 9.93 | 0.30 | 0.07 | 20.00 | / |

All data refer to a medium and ambient temperature of +20°C.
 Specification of the bending radius related to the inside of the hose bend
 Subject to technical changes and colour deviations

Delivery Variants

Available in other lengths, other nominal diameters, with customer-specific customer-specific imprint.

Disposal instructions

After use, the product must be disposed of in accordance with the legal regulations applicable in the user's region (in Germany in accordance with the applicable Waste Catalogue Ordinance (AVV)).

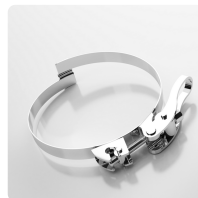
Possible Connection Elements



Master-Grip Hose Clamp, screwable
 Special clamp for fastening light and medium-weight, right-handed spiral hoses such as Flamex B-se, Flamex B-F se, Master-PUR Trivolution, Master-PVC and Master-SANTO



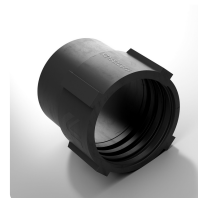
Master-Grip Hose Clamp, screwable, Steel quality W4, stainless steel 1.4301
 Special clamp for fastening light and medium-weight, right-handed spiral hoses such as Flamex B-se, Flamex B-F se, Master-PUR Trivolution, Master-PVC and Master-SANTO



Master-Grip Quick-Fix Clamp
 Special clamp for fastening light and medium-weight, right-hand spiral hoses such as Flamex B-se, Flamex B-F se, Master-PUR Trivolution, Master-PVC and Master-SANTO



Hose connector
 Sheet steel connector for extending, connecting and joining light to medium-weight hoses



PU Screw Cuff EL
 PU end fitting for Master-PUR L/H and Master-PVC L/H hoses, electrically conductive



Combiflex PU Threaded Sockets
 PU threaded connector for all Master-PUR L, Master-PUR H and Master-PUR HX hose types, based on DIN ISO 228

Individual consultation

We offer consultation by
phone:
+49 209 97077-112

Product requests via
[masterflex.de/en](https://www.masterflex.de/en)

Address Headquarters

Masterflex SE
Willy-Brandt-Allee 300
45981 Gelsenkirchen

